

TRUSS FRAME CONVEYOR

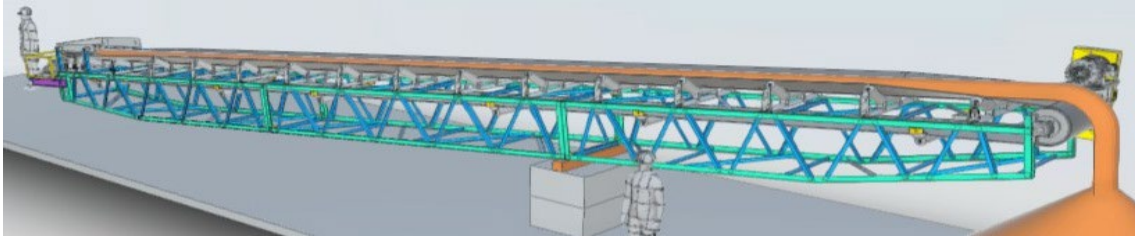
36" Deep Truss, Hot Dip Galvanized, with 4 x 3 x 1/4 Chords for supports on 40'-0" max spacing, based on 100 PCF aggregate material. Includes Frame, Pulleys with Shafts and Bearings, C5 Idlers, Motor/Reducer, Primary Scraper, Screw Takeups, Tail Pulley Guard, 10' Loadskirt, Belt with Mechanical Splice. Includes Supports on 40' centers up to 15' in height. Taller supports may be painted with Gray Enamel. Assembled to fullest extent possible.

24" BELT WIDTH

Pulley Ctrs	Capacity Max TPH	Incline	HP	FPM	Belt PIW	Head Pulley	Shafts		Takeup Travel
							Head	Tail	
60' – 80'	300	0	7.5	350	220	16	2.937	2.437	24
		1-10	15	350	220	16	2.937	2.437	
		11-18	20	350	220	18	3.437	2.437	
81' – 120'	300	0	10	350	220	16	2.937	2.437	36
		1-10	15	350	220	16	2.937	2.437	
		11-18	25	350	220	18	3.437	2.437	
121' – 160'	300	0	10	350	220	16	2.937	2.437	36
		1-10	20	350	220	16	2.937	2.437	
		11-18	30	350	330	18	3.437	2.437	
161' – 200'	300	0	15	350	220	16	2.937	2.437	48
		1-10	25	350	220	18	3.437	2.437	
		11-18	40	350	330	18	3.437	2.437	

- * Advise if Discharge Head Pulley Hood and/or Discharge Spout is required
- * For Gravity Takeup with (2) Bend Pulleys, (1) Wing Pulley, Shafts and bearings, with Takeup Box, additional costs apply
- Note: Additional weight required by installer for proper tensioning
- * Covers are Galvanized smooth Domed Covers with Hoopbands; assembled to conveyor frame
- * Manwalk is 24" Wide Serrated Galvanized GripStrut Grating//Flooring with Integral Toeplates, with Handrails painted OSHA safety yellow
- * Wrap Around Service Platform (Requires Discharge Chute), additional costs apply
- * SAFETY: (1) RS-2 E-Stop Safety Switch with Safety Cable, additional costs apply
- Note: Each Switch covers up to 200' of conveyor and is priced "per side"
- * TA-2 Tilt Alignment Switches: For (1) Set (2 switches), additional costs apply
- * For M100T Zero Speed Switch with Pulser Disc and Transducer, additional costs apply





TRUSS FRAME CONVEYOR

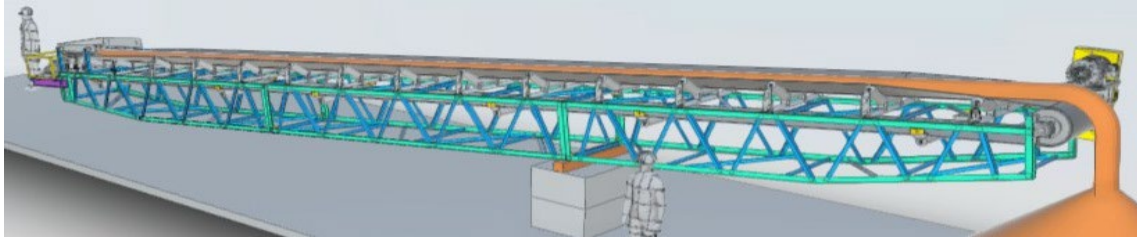
36" Deep Truss, Hot Dip Galvanized, with 4 x 3 x ¼ Chords for supports on 40'-0" max spacing, based on 100 PCF aggregate material. Includes Frame, Pulleys with Shafts and Bearings, C5 Idlers, Motor/Reducer, Primary Scraper, Screw Takeups, Tail Pulley Guard, 10' Loadskirt, Belt with Mechanical Splice. Includes Supports on 40' centers up to 15' in height. Taller supports may be painted with Gray Enamel. Assembled to fullest extent possible.

30" BELT WIDTH

Pulley Ctrs	Capacity Max TPH	Incline	HP	FPM	Belt PIW	Head Pulley	Shafts		Takeup Travel
							Head	Tail	
60' – 80'	500	0	10	350	220	16	3.437	2.937	24
		1-10	20	350	220	18	3.437	2.937	
		11-18	25	350	220	18	3.437	2.937	
81' – 120'	500	0	15	350	220	16	3.437	2.937	36
		1-10	25	350	220	18	3.437	2.937	
		11-18	40	350	330	18	3.437	2.937	
121' – 160'	500	0	15	350	220	16	3.437	2.937	36
		1-10	30	350	220	18	3.437	2.937	
		11-18	40	350	330	20	3.937	2.937	
161' – 200'	500	0	15	350	220	16	3.437	2.937	48
		1-10	40	350	330	18	3.437	2.937	
		11-18	50	350	330	20	3.937	2.937	

- * Advise if Discharge Head Pulley Hood and/or Discharge Spout is required
- * For Gravity Takeup with (2) Bend Pulleys, (1) Wing Pulley, Shafts and bearings, with Takeup Box, additional costs apply
- Note: Additional weight required by installer for proper tensioning
- * Covers are Galvanized smooth Domed Covers with Hoopbands; assembled to conveyor frame
- * Manwalk is 24" Wide Serrated Galvanized GripStrut Grating/Flooring with Integral Toeplates, with Handrails painted OSHA safety yellow
- * Wrap Around Service Platform (Requires Discharge Chute), additional costs apply
- * SAFETY: (1) RS-2 E-Stop Safety Switch with Safety Cable, additional costs apply
- Note: Each Switch covers up to 200' of conveyor and is priced "per side"
- * TA-2 Tilt Alignment Switches: For (1) Set (2 switches), additional costs apply
- * For M100T Zero Speed Switch with Pulser Disc and Transducer, additional costs apply





TRUSS FRAME CONVEYOR

36" Deep Truss, Hot Dip Galvanized, with 4 x 3 x ¼ Chords for supports on 40'-0" max spacing, based on 100 PCF aggregate material. Includes Frame, Pulleys with Shafts and Bearings, C5 Idlers, Motor/Reducer, Primary Scraper, Screw Takeups, Tail Pulley Guard, 10' Loadskirt, Belt with Mechanical Splice. Includes Supports on 40' centers up to 15' in height. Taller supports may be painted with Gray Enamel. Assembled to fullest extent possible.

36" BELT WIDTH

Pulley Ctrs	Capacity Max TPH	Incline	HP	FPM	Belt PIW	Head Pulley	Shafts		Takeup Travel
							Head	Tail	
60' – 80'	700	0	15	350	220	16	3.937	3.437	24
		1-10	25	350	220	18	3.937	3.437	
		11-18	40	350	330	18	3.937	3.437	
81' – 120'	700	0	15	350	220	16	3.937	3.437	36
		1-10	30	350	220	18	3.937	3.437	
		11-18	50	350	330	20	4.437	3.437	
121' – 160'	700	0	20	350	220	16	3.937	3.437	36
		1-10	40	350	220	18	3.037	3.437	
		11-18	60	350	330	20	4.437	3.437	
161' – 200'	700	0	20	350	220	16	3.937	3.437	48
		1-10	50	350	330	20	3.937	3.437	
		11-18	75	350	330	20	4.437	3.437	

- * Advise if Discharge Head Pulley Hood and/or Discharge Spout is required
- * For Gravity Takeup with (2) Bend Pulleys, (1) Wing Pulley, Shafts and bearings, with Takeup Box, additional costs apply
- Note: Additional weight required by installer for proper tensioning
- * Covers are Galvanized smooth Domed Covers with Hoopbands; assembled to conveyor frame
- * Manwalk is 24" Wide Serrated Galvanized GripStrut Grating/Flooring with Integral Toeplates, with Handrails painted OSHA safety yellow
- * Wrap Around Service Platform (Requires Discharge Chute), additional costs apply
- * SAFETY: (1) RS-2 E-Stop Safety Switch with Safety Cable, additional costs apply
- Note: Each Switch covers up to 200' of conveyor and is priced "per side"
- * TA-2 Tilt Alignment Switches: For (1) Set (2 switches), additional costs apply
- * For M100T Zero Speed Switch with Pulsar Disc and Transducer, additional costs apply



Included:

Head Section: Truss Frame (36" Deep), Hot Dip Galvanized, Assembled, complete with:

- Head Shaft, turned down only for reducer
- (2) Dodge Type E Pillow Block Roller Bearings
- Crown Faced Welded Steel Drum Pulley, with 3/8" thick Herringbone Lagging, with XT bushings
- Primary Scraper

Tail Section: Truss Frame (36" Deep), Hot Dip Galvanized, Assembled, complete with:

- Tail Shaft, same bore through pulley and bearings
- (2) Dodge Type SCM Pillow Block Ball Bearings
- Crown Faced Welded Steel Wing Tail Pulley, with XT bushings
- (2) Screw Takeup Frames
- 10'-0" of Loadskirt Box, with adjustable clamp bar, with loadskirt rubber

Intermediate Section(s): Truss Frame (36" Deep), Hot Dip Galvanized, Assembled.

Support Legs/Bents, on 40'-0" max Centers

- Advise if Tail is not a grade level as additional costs may apply if elevated

(2) 20 Degree C5 Equal Length Transition Idlers

(10) 35 Degree C5 Equal Length Idlers in load area

(*) 35 Degree C5 Equal Length Idlers in conveying area

(*) Flat C5 Return Idlers with Nip Guards

(*) Self-Aligning Training Idlers on appx 75'-0" centers on Carry side and Return side

Belting, rated for service, Unbranded with Top and Bottom covers, with mechanical splice
 Motor HP for service, 3/60/230-460, TEFC, Premium Efficient Motor with Dodge TA2 Class II
 Reducer, with Motor Mount, Taper Bushing Assembly, Tie-Rod Torque Arm assembly, Vee-Belt
 Drive, and OSHA approved Belt Guard

Optional Items to consider:

Discharge Pulley Hood Cover & Discharge Spout/Chute

Manwalk (with or without Head Service Platform)

Zero Speed Switch

E-Stop Switches with Pull Cable

Domed Covers

Gravity Takeup

Belt Alignment Switches

